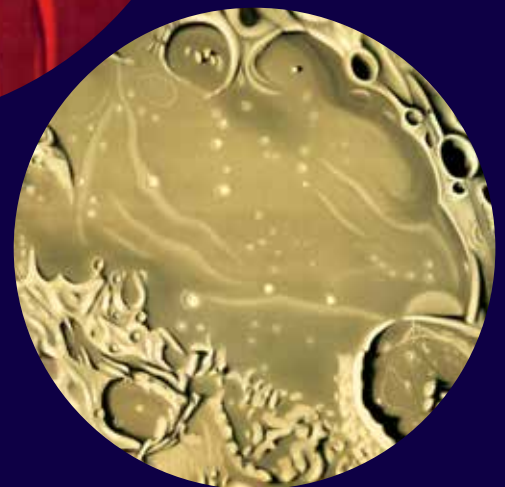
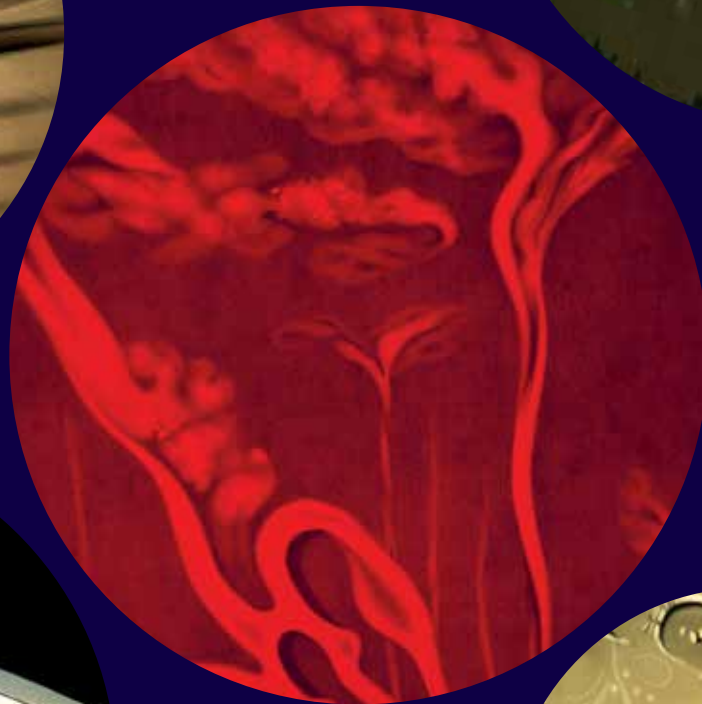


Why Girls Go Astray

DISTINCTIVE
DECOUPAGE

WHOLESALE
CATALOG





WHOLESALE CATALOG

Why Girls Go Astray
contact: Andy Lowry
andy@whygirlsgoastray.com
916.753.0358
www.whygirlsgoastray.com



Sacramento Magazine

Welcome to Why Girls Go Astray! We are a purveyor of eccentric, exceptional, exquisite decoupage wares for the home. We make our products by hand, and take pride in our ability to carefully replicate 18th- and 19th-century decoupage methods.

We specialize in under-glass decoupage, a variation of the *potichomania* process (*potiche* meaning oriental vase and *manie* referring to mania). This technique was perfected in mid-19th century England and refers to decorating clear glass vases with cutout prints. Coating the inside of the vessels with engravings or paintings gave them the appearance of painted ware. Under-glass decoupage originated in Italy during the 18th century. The demand for imported Chinese and Japanese screens, boxes, fans, vases, etc. was enormous, and owning decorated lacquered items became a symbol of high status. Venetian decorators of the

day created the effect of painted lacquer-ware by using cut-out engravings, which were then pasted on painted wood and glass. Its popularity soon spread to France and throughout Europe, and the decorating trend made its way to the U.S. in the 1900s.

With this technique, the glass acts as both a foundation and protective finish. The relative thinness of the tray belies the complexity of this process. The trays are comprised of glass, multiple layers of paper, adhesive, paint, acrylic spray, and a high-quality felt pad on the bottom.

Our wares are designed to not only look spectacular, but also to provide years of service as a serving tray, repository for everyday small items, or reliquary for treasures of significance.

For any wholesale order, please allow 2-3 weeks for your order to be made, and readied for shipment.

We always try to accommodate rush orders when possible.

Our order fulfillment time can be a little longer during our busy summer and holiday seasons, so please get your requests in early. Please visit our website at www.whygirlsgoastray.com for additional information and photographs.

USE: FOR DECORATIVE PURPOSES ONLY

©2018 WHY GIRLS GO ASTRAY; ALL RIGHTS RESERVED

*Why Girls Go Astray makes custom trays and flats!
We can take your original document and create a custom design for any need that you might have.*

TABLE OF CONTENTS

NEW COLLECTION	PGS. 3-9
WALL HANGINGS	10-12
DECOUPAGE UNDER GLASS	13-18
ORDERING INFORMATION & POLICIES	19

NEW COLLECTION

Our interest in the galaxies above seem to have been omnipresent throughout history. We are driven to explore the unfamiliar, identify new worlds, and push the frontiers of our scientific and technical limits. This burning desire to discover and further the boundaries of what we know has entranced our societies for centuries.

Our Space is the Place collection has been four years in the making — but I've had an enduring interest in space exploration since I was young. The mysterious and provocative nature of space exploration has always held an allure. I think it unlocks secret dreams within all of us. At the core of this collection are the remarkable *The Trouvelot Astronomical Drawings* (1882) which we've made into stunning wall hangings. We've added a variety of under-glass decoupage trays featuring our favorite forms of space phenomena — shooting stars, comets, planets, nebula, and antique solar system maps. Space *is* the Place.

Space is the Place



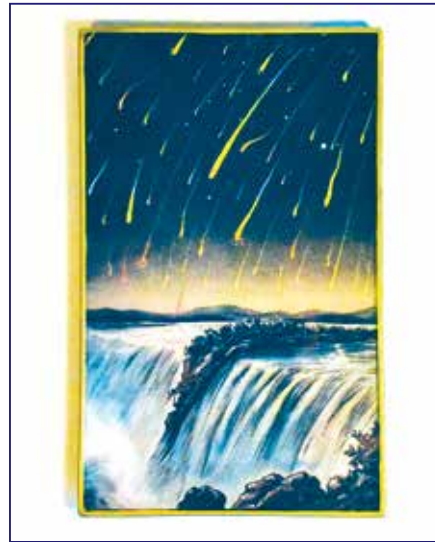
Pérégrinations D'une Comète

6 x 10"

\$29.00

SKU: GT27

"Wanderings of a comet" — A whimsical illustration of Saturn and the universe from J. J. Grandville's *Un Autre Monde* ("Another World"), published in 1844. A French caricaturist, Grandville's art came to fruition in the books he illustrated. Best-known for his anthropomorphic plants and animals, his work often transcended mere satire, achieving humor alongside poetic beauty and wonder. Though Grandville's style lacked easy definition in his own time, later generations would credit him as the "grandfather of surrealism."



Leonid Meteor Storm

5 x 8"

\$24.00

SKU: GT28

We simply adore this tray— an improbable deluge of rainbow-hued meteors, over a rushing double waterfall. The scene looks like fantasy, but was observed and recorded by the very eminent Austrian astronomer Edmund Weiss on November 12th-13th, 1833. With the glow of the comets even reflected in the double cataract, we admit there may be a bit of embellishment going on here. But such was the Zeitgeist, no?



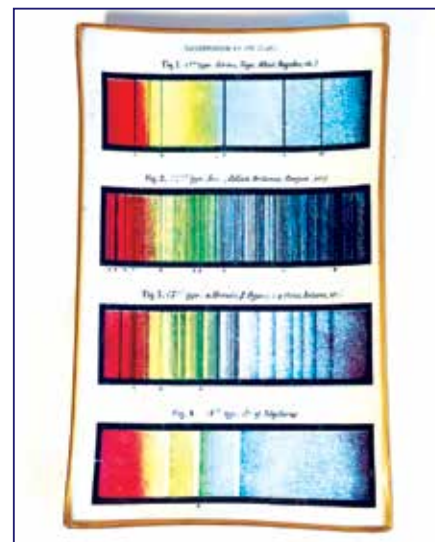
Rocket Blast Off Blossoms

5 x 8"

\$24.00

SKU: GT29

With its stylized, cartoonish rocket ship, plume of puffy exhaust, and primary colors, this whimsical blast-off from a tiny, cratered planet taps all the right centers in our brain: old space serials, Constructivist art, 40s and 50s cartoons, and pulp fantasy comics. Maybe even a hint of 60s Pop art, too. Groovy!



Star Classification

6 x 10"

\$29.00

SKU: GT30

Spectrum observations tell us that the stars resemble the Sun, as to the general character of their composition. Their light, like that of the Sun, emanates from a matter raised to an intense white heat, and traverses an atmosphere of absorbing vapors. Yet, each star differs from the other, though not to an essential degree, in its chemical composition.

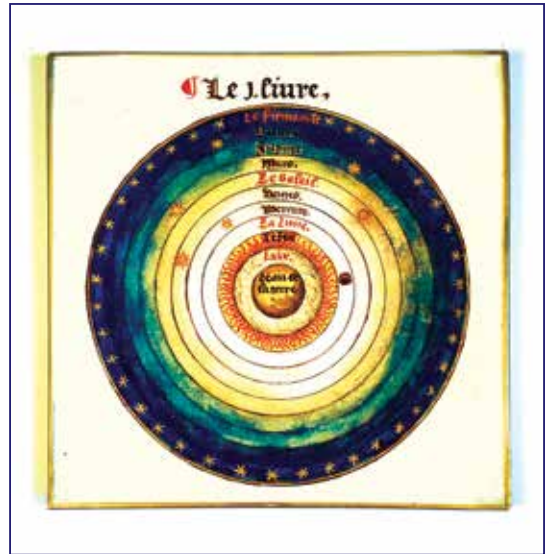


Aerolite Observed July 1867 of Ornament

5 x 8" \$24.00

SKU: GT31

From *Astronomy* by Jean Pierre Rambosson (1875). Believed to originate in the asteroid belt between the planets of Mars and Jupiter, meteorites are solid pieces of debris from an object, such as a comet or asteroid that survives its passage through the atmosphere to reach the surface of a planet or moon. When the object enters the atmosphere, various factors cause it to heat up and radiate energy, becoming a meteor and forming a fireball, also known as a shooting star or falling star.



Le Sphere du Monde

9 x 9" \$29.00

SKU: GT32

Oronce Fine completed his *Le sphere du Monde* in 1549 as an illustrated presentation manuscript for King Henry II of France. This gorgeous woodcut from his *De mundi sphaera* illuminates what was, at that time, the current understanding of the solar system. Notice how the positions of the Sun and Earth are switched, with the central Earth ringed by a sphere of air, then fire.

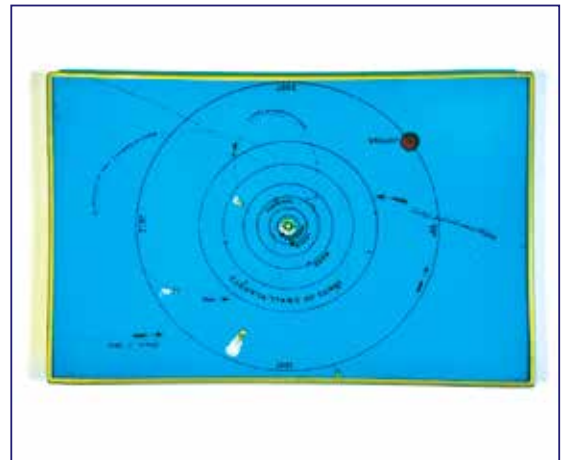


Pearline

4 x 6" \$19.00

SKU: GT33

One of the great advertisers of the late 19th century, James Pyle and his "Pearline Washing Compound" created scores of chromolitho print ads, bills, and trade cards hawking the miracle soap. Pyle even went so far as to label competitor's products as "imitations" and "dangerous." This particular 1896 incentive, included in the packaging, presented twin moons surrounded by stars, teased with, 'directions on back... to find the Maid in the Moon.' Note how the stars cryptically spell out "PEARLINE." Early subliminal advertising!



Solar System

5 x 8" \$24.00

SKU: GT34

An antique engraving of a 19th-century Indian wedding mandala from "Details and Ornaments from the Alhambra" from drawings taken on the spot in 1834 by Jules Goury, and in 1834 /1837 by Owen Jones. The Alhambra, so called because of its reddish walls, is a palace and fortress complex located in Granada, Spain that features unrivaled tile-work and carvings.

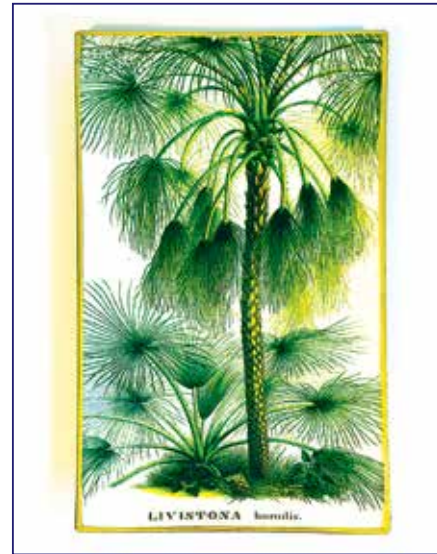


Pink Butterflies

9 x 9" \$29.00

SKU: GT39

Straddling the edge between Art Nouveau and Art Deco, this bold tray captures stylized yellow butterflies against a riotous background of fuchsia and orange chrysanthemums. The organic motifs and saturated colors (the Nouveau), combined with sharp angles and negative linear spaces (the Deco), add up to an completely unique effect.



Livistonia Palm

5 x 8" \$24.00

SKU: GT40

A classic 19th-century botanical plate, showcasing the lush fan palm *Livistona Humilis*. Striking in its composition of dark and light, the dark fan centers pop against a stark white background, trailing off into spidery fronds. It gives us the impression of a fireworks grand finale in shades of green!



Passion Flower

6 x 10" \$29.00

SKU: GT41

Arresting in its strangeness, this exotic flower seems almost part animal — starfish, perhaps? The giant *granadilla*, native to the Neo-tropics, possesses many fascinating attributes beyond its showy blossom. Its roots are an emetic and narcotic (and poisonous, in quantity), its leaves are brewed as a medicinal tea for diabetes and high blood pressure, and it produces the largest fruit of its genus, used to flavor drinks and ice cream. A favorite of horticulturalists, it is often grown under glass in temperate zones.



Blue Butterflies

6 x 6" \$19.00

SKU: GT42

Eugène Séguy (1889-1985), was one of the most important French designers of the early 20th century, working primarily with the Art Deco and Art Nouveau frameworks. He held a chair of entomology at the Muséum national d'histoire naturelle in Paris from 1956-1960. Known for his textiles work, he produced extremely rare portfolios featuring butterflies using the pochoir technique.



Victorian Waterlilies

5 x 8" \$24.00

SKU: GT35

In this lush chromolithograph from 1908, a panoply of "Aquatic Plants" from around the globe is brought together in a highly unlikely, but gorgeous, jungle scene. We'll call it artistic license. Center stage is the Giant Water-Lily, *Victoria Regia* (now *Amazonica*.) Named in honor of Queen Victoria, Great Britain was obsessed with this tropical wonder throughout her reign. Several Dukes competed to grow the first one in "captivity," an English coal-fire heated greenhouse. Joseph Paxton, the Duke of Devonshire, was the first in 1849.



Flowering Cactus

5 x 10" \$26.00

SKU: GT36

This spectacular Mary Eaton watercolor shows an *Echinopsis* cactus in blooming glory. Also known as the "Easter Lily cactus" and "Night-blooming Hedge-hog," we think it's out-of-this-world- literally! With it's spiny pod-like body and showy eye-stalk flower, it's as alien as anything in nature.



Riviere Gorge Palm

5 x 8" \$24.00

SKU: GT37

This beautiful chromolithograph captures a lone, towering betel palm rising into the dawn sky on Reunion Island. Below, the Riviere de l'Est gorge cuts through the distance, sending mist heavenwards. A great example of a single species in its natural setting. From Carl Friedrich Philipp von Martius' groundbreaking *Natural History of Palms: a work in three volumes*, published between 1823 and 1853.



Pink Magnolias

6 x 10" \$29.00

SKU: GT39

Simply, one of our most dazzling trays. This detail of a saucer magnolia (*Magnolia x Soulangeana*), is a breathtaking botanical study in the color pink. From the soft blush variations of the blossom interior, to the madder-fading-into-black exteriors, the hues combine to compose a masterpiece of the lithographer's art. First bred in Paris by a Napoleonic officer in 1826, the saucer magnolia is now widely distributed throughout the British Isles and the United States.



Green Butterflies

6 x 6" \$19.00

SKU: GT43

Eugène Séguy (1889-1985), was one of the most important French designers of the early 20th century, working primarily with the Art Deco and Art Nouveau frameworks. He held a chair of entomology at the Muséum national d'histoire Naturelle in Paris from 1956-1960. Known for his textiles work, he produced extremely rare portfolios featuring butterflies using the pochoir technique. Pochoir was a time-consuming process but resulted in deep, rich colors. The geometric designs of Art Deco were ideal for stenciling and the technique became something of a fad with French fashion publishers. Photography was often used to print the primary outline and then, the colors added with a brush through zinc or aluminum stencils.



Multiple Cacti

6 x 10" \$29.00

SKU: GT44

This wild tray features a selection of flowering cacti under the genera of *Echinocereus*, *Rebutia*, and the archaic *Lobivia* (now under the genus *Echinopsis*.) All these cacti share the characteristic of similar bright, red flowers, from cacti in a plethora of shapes and sizes. "*Echinocereus*" means "hedgehog candle" in Latin, aptly describing the inherent spines, cylindrical shapes, and flower "flame."



Waterfall

6 x 10" \$29.00

SKU: GT45

For those inclined to the dark and mysterious, this tray features a profusion of *Arecoidea* palms. Forming a dense canopy over a waterfall in Mexico's Jalapa province, we love the abstract patterns created by the riot of fronds... and, in the middle, glimpses of silvery water — almost like daylight. From Carl Friedrich Philipp von Martius' *Book of Palms: a work in three volumes*, published between 1823 and 1853.

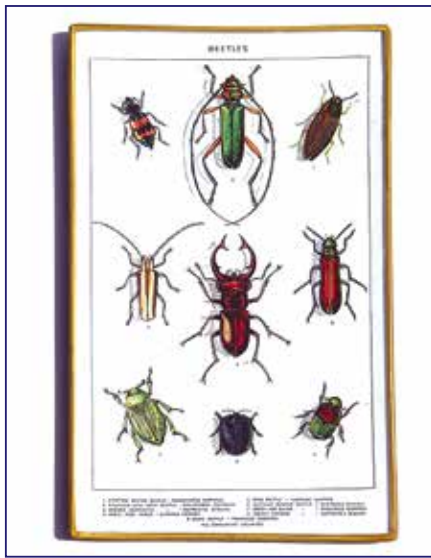


Ferns

5 x 8" \$24.00

SKU: GT46

Underlying this tray, courtesy of a charming botanical illustration, is a diverse selection of turn-of-the-century fern specimens. Varying in form, the tray is tied together by the subtle shading of cool greens and earthy browns that seemingly flow through the plants. Please, marvel at how the "Christmas-Fern" looks remarkably like a "Christmas-Tree."



Beetles

5 x 8" \$24.00

SKU: GT47

Displaying nine jewel-like specimens, this early 20th century entomology plate presents a selection of large and iridescent members of the beetle family. A borer, longhorn, blister, and stag beetle are all represented, along with the wonderfully (and aptly) named Golden Tortoise. Perfect for the coleopterologist in your life.



Tattoo Woman

4 x 6" \$19.00

SKU: GT48

With a look of defiance, this proud woman of 1907 shows off her extensive collection of classic American tattoo art. From the neck up, she's the picture of conformity with tasteful pearls and a coquettish flower; but, from the neck down, it's a rebellious jungle of snakes, birds, horses, and lions.

Owen Jones was one of the most influential taste-makers of the Victorian era. His pioneering studies on color theory, geometry and form still inspire designers to this day. Grammar of Ornament was Owen Jones' design masterpiece. First published in 1856, the lavish folio highlighted stunning patterns, motifs and ornaments in 112 illustrated plates. Each intricate illustration explored design principles behind the architecture, textiles, manuscripts and decorative arts of 19 diverse cultural periods, with a final chapter reveling in the glory of the natural world.



Egyptian Columns

5 x 8" \$24.00

SKU: GT49

The Grammar of Ornament reflects his view of the "grammar" of ancient Egyptian art, as he summarizes: "every flower or other object is portrayed not as a reality, but as an ideal representation. It is at the same time the record of a fact and an architectural decoration, to which even their hieroglyphic writing, explanatory of the scene, by its symmetrical arrangement added effect."



Egyptian Columns II

6 x 10" \$29.00

SKU: GT50

One of the most influential design manuals of the Victorian period, Owen Jones' masterpiece, The Grammar of Ornament brought vibrant and accurate Egyptian motifs to a wide audience. Jones combined his training as an architect and an interest in antiquity with new techniques in chromo-lithography to create for the first time easily available colored re-creations of Egyptian designs, from flora and column capitals to patterns employed in a range of ancient monuments and objects.



Grammar of Ornament

5 x 8" \$24.00

SKU: GT51

This incredible chromolithograph is taken from Owen Jones's *The Grammar of Ornament*. Originally published in 1856, this book is one of the holy grails of art reference books. With his signature style, Jones documented samples of ornamental design from all over the globe.



Arabesque Square

6 x 6" \$19.00

SKU: GT52

Our new square trays are the perfect fit for Jones' love of elaborate and intricate ornamentation. This six-inch tray features a section of his gorgeous Arabesque design taken from a larger tiled design.



Wedding Mandala

6 x 6" \$19.00

SKU: GT53

An antique engraving of a 19th-century Indian wedding mandala from "Details and Ornaments from the Alhambra" from drawings taken on the spot in 1834 by Jules Goury, and in 1834 /1837 by Owen Jones. The Alhambra, so called because of its reddish walls, is a palace and fortress complex located in Granada, Spain that features unrivaled tile-work and carvings.



Owen Jones Ceiling Tile

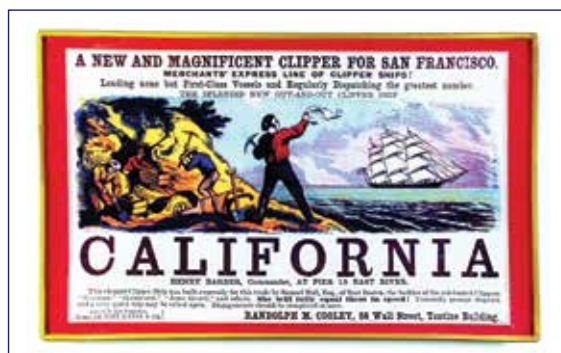
5 x 8" \$24.00

SKU: GT54

Another beauty from Owen Jones! This 5x8 inch glass tray features an intricate ceiling design. Owen Jones' *The Grammar of Ornament*. With his signature style, Jones documents samples of ornamental design from all over the world. We think this gorgeous tray would complement any room!

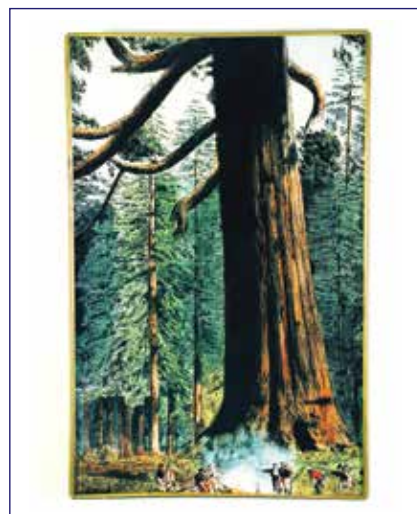


THE WEST



California Clipper Ship
5 x 8" \$24.00 SKU: GT52

A graphic sailing card for the clipper ship California, depicting scenes from the California gold rush, circa 1850 by G.F. Nesbitt & Co. Clippers sailed primarily on the trade routes between the United Kingdom and its colonies in the East, in trans-Atlantic trade, and the New York-to-San Francisco route around Cape Horn during the California Gold Rush.



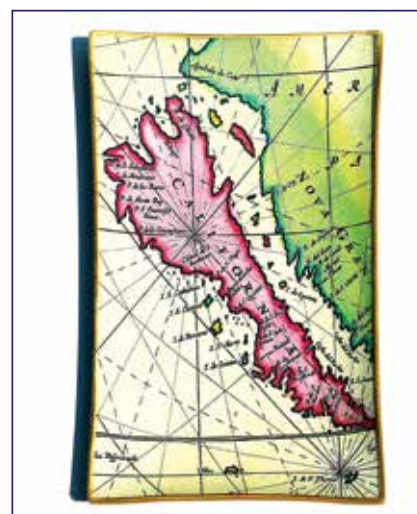
Mariposa Grove
6 x 10" \$29.00 SKU: GT55

Mariposa Grove is also one of our new 6x10 inch trays and features the awe-inspiring illustration "Sequoia Wellingtonia, Mariposa Grove," from Pinetum Britannicum, 1884. A later volume included this lithograph by W. H. Schenck —featuring an especially magnificent tree in the Mariposa Big Tree Grove with a group of figures huddled around a campfire.



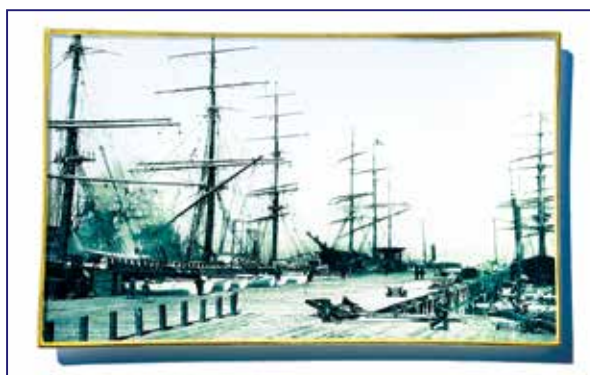
Coachella Date Palms
6 x 12" \$32.00 SKU: GT53

Like a fever dream, this turn-of-the-century date palm grove in the Coachella Valley conjures up visions of tranquil desert oases; we love the juxtaposition of the ethereal black-and-white — the shade of the canopy of fronds in the foreground, the ghost-like palms in the full sun of the distance.



California Coast
6 x 10" \$29.00 SKU: GT56

This 1745 map of "California" features two glaringly obvious cartographical errors — that the Baja California peninsula was an island, and that it occupied the entirety of the west coast of North America. This was corrected by 1539, when de Ulloa's expedition confirmed the Baja Peninsula was just that. For the next 80 years, maps reflected this correct view. Inexplicably, in 1622, European maps started again showing California as an island, adrift in the Pacific. It took a royal decree by Ferdinand VI of Spain in 1747 — over 100 years later- to set the record straight. Old habits die hard, though, and maps showing California as an island were still being printed as late as 1865.



San Francisco Bay Ships
5 x 8" \$24.00 SKU: GT54

This tray features clipper ships in dock in San Francisco Bay, circa 1908. Their sails furled, masts and cross-trees appear as a skeletal forest, draped moss-like with rigging and dwarfing the dockworkers. These ships were likely the last of the clippers and their four-masted cousins, the windjammers; by the end of the 19th century, steam power had mostly replaced sail power.

WALL HANGINGS

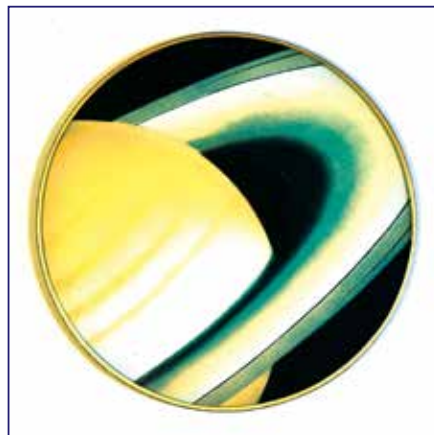
Featuring exquisitely detailed antique German, French, and English lithographs, our new under-glass decoupage wall hangings will add an unexpected pop of color or focal point to any room! (We recommend hanging several together for maximum sensory impact.) These wall hangings measure approximately six inches, with a depth of 3/16 of an inch.

All of our glass is U.S.A. made.

In this English 19th-century decoupage technique, the glass acts as both a foundation and protective finish. Each wall hanging is comprised of a glass flat with multiple layers of paper, adhesive, and paint painstakingly applied. We've added a bright gold gilded edge for a luxurious look and feel.

You'll find a high-quality felt pad on the back to protect your walls. The purchase price of each wall hanging includes all of the necessary hardware for immediate usage.

Minimum purchase: 4 flats (Pick any four; Parrot Quad not included in \$15/each offer.) Desire fewer than four? No problem — contact us for an updated price.



Saturn

\$15.00

SKU: WH01



Solar Flares

\$15.00

SKU: WH02



Jupiter

\$15.00

SKU: WH03



Shooting Star

\$15.00

SKU: WH04



Aurora Borealis

\$15.00

SKU: WH05



Star Cluster

\$15.00

SKU: WH06



Mare Humorum

\$15.00

SKU: WH07



Mars

\$15.00

SKU: WH08



Lavender

\$15.00

SKU: WH06



Blue & Red Bird

\$15.00

SKU: WH07



Peach

\$15.00

SKU: WH08



Mycology 1

\$15.00

SKU: WH09



**Parrot Quad Hangings
(4 per set)**

\$50.00

SKU: WH10

DECOUPAGE WALL HANGINGS



Red Mycology

\$15.00

SKU: WH11



Apple

\$15.00

SKU: WH12



Mycology 2

\$15.00

SKU: WH13



Foxglove

\$15.00

SKU: WH14



Sweet Orange

\$15.00

SKU: WH15



Raspberries

\$15.00

SKU: WH16



Black Birds

\$15.00

SKU: WH17



Pomegranate

\$15.00

SKU: WH18

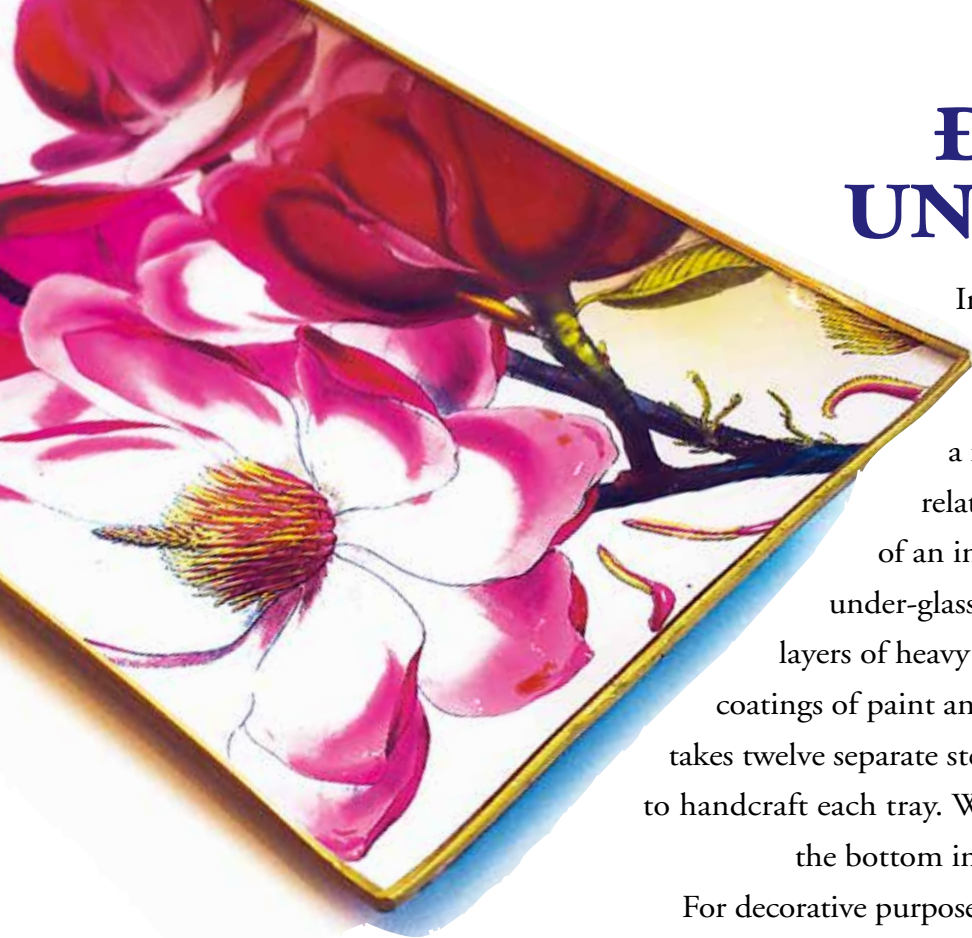


Pink Tea Rose

\$15.00

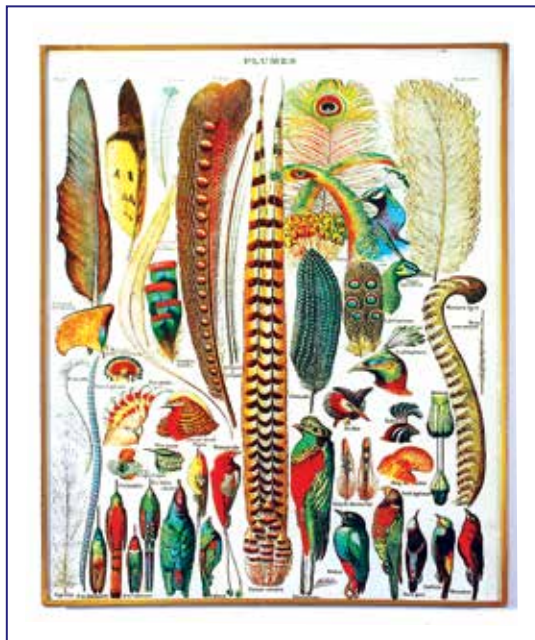
SKU: WH10



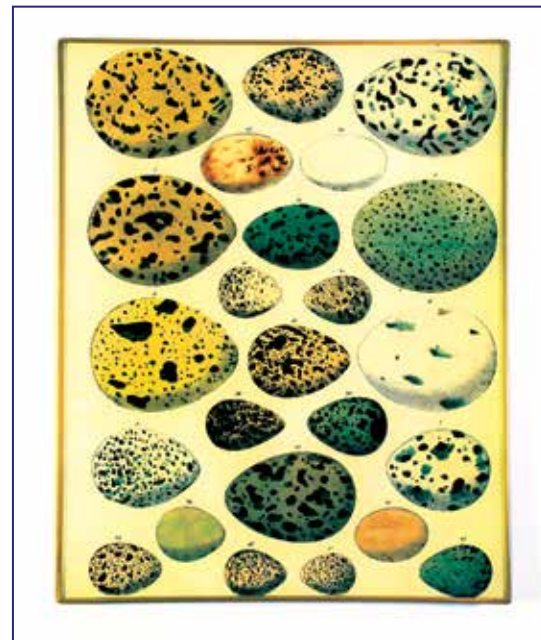


DECOUPAGE UNDER GLASS

In the 19th century English decoupage technique of *potichomania*—or under-glass—the glass acts as both a foundation and protective finish. The relative thinness of the tray, at one-eighth of an inch thick, belies the complexity of the under-glass technique. Each tray is comprised of layers of heavy weight paper, in addition to multiple coatings of paint and clear acrylic coating, and gilding. It takes twelve separate steps and a minimum of fourteen days to handcraft each tray. We've added a high-quality felt pad on the bottom in order to protect your home surfaces. For decorative purposes only. Wipe clean with glass cleanser. Do not submerge in water.

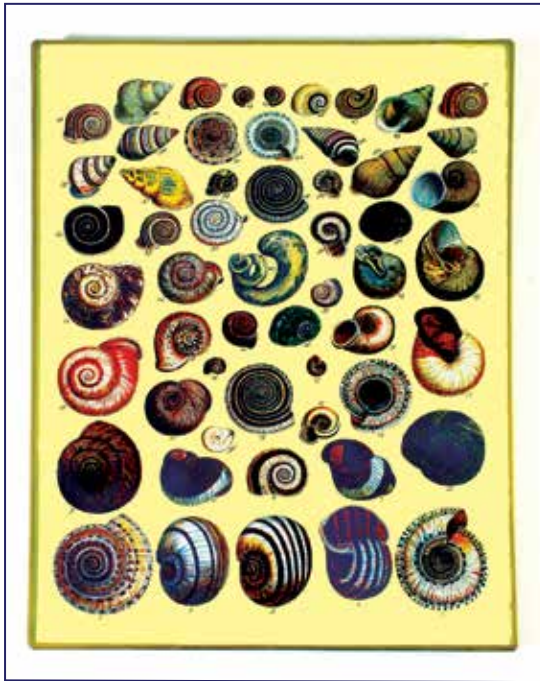


Plumes
8 x 10"
\$37.50
SKU: GT001

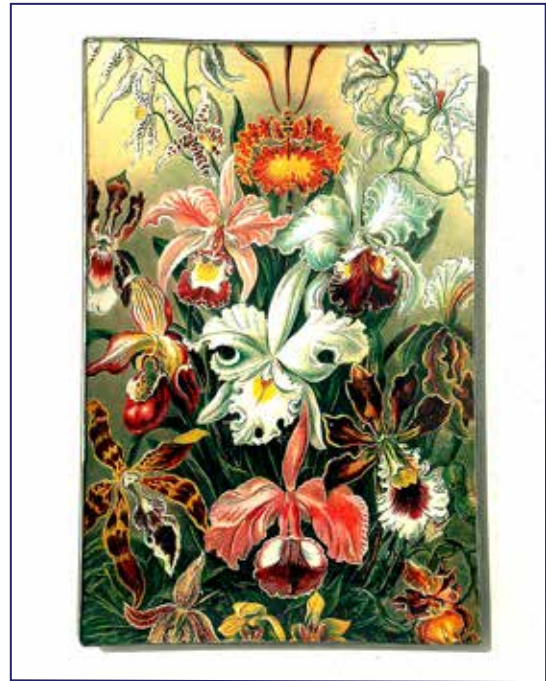


Coloured Birds' Eggs
8 x 10"
\$37.50
SKU: GT002

Decoupage Under Glass



Shell Collection
8 x 10"
\$37.50
SKU: GT004



Orchids
5 x 8"
\$24.00
SKU: GT005

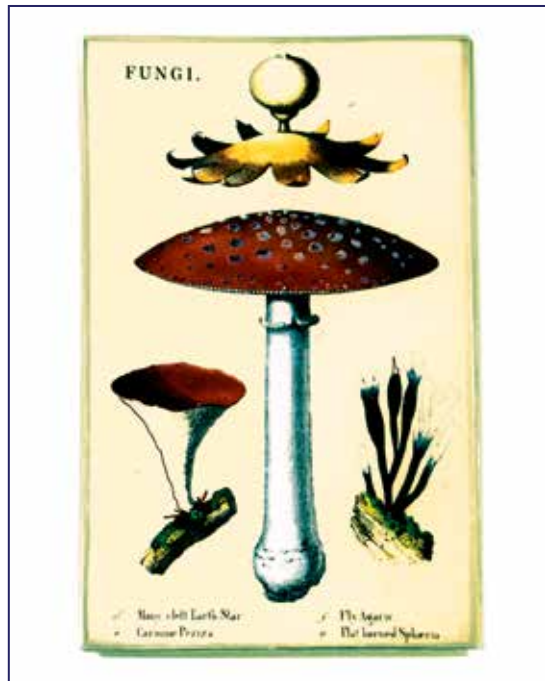


Hummingbirds
5 x 8"
\$24.00
SKU: GT005

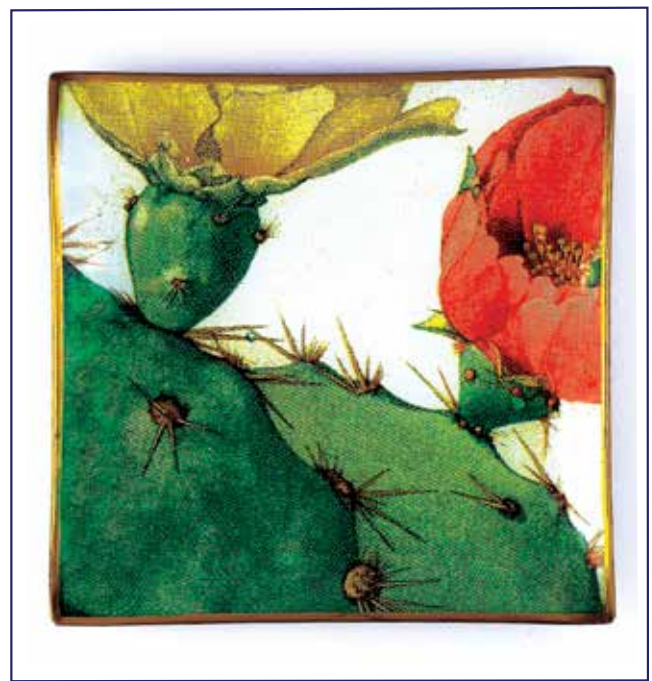


French Flora
5 x 8"
\$24.00
SKU: GT006

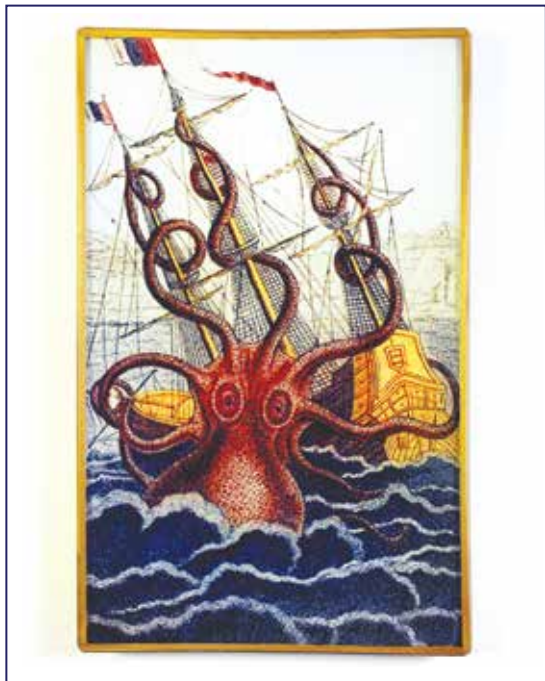
Decoupage Under Glass



Fungi
5 x 8" \$24.00
SKU: GT007



Cactus Blossom
6 x 6" \$20.00
8 x 8" \$25.00
SKU: GT008
SKU: GT009



Colossal Octopus
5 x 8" \$24.00
SKU: GT010

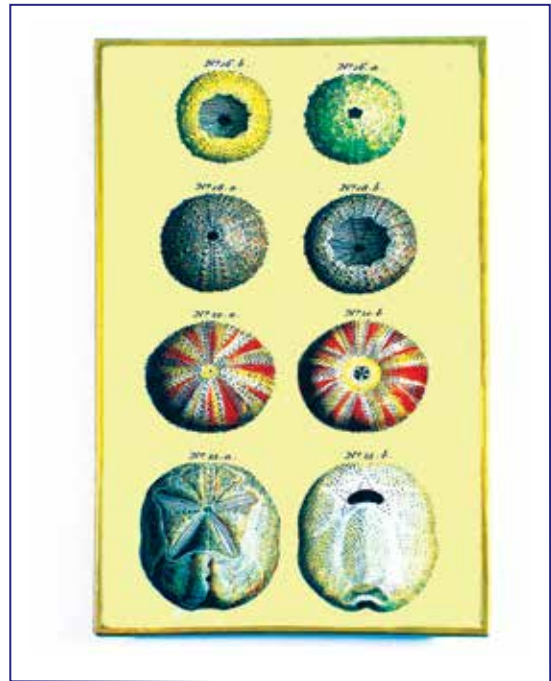


Vaughn's Seed Store
4 x 6"
\$19.00
SKU: GT011

Decoupage Under Glass



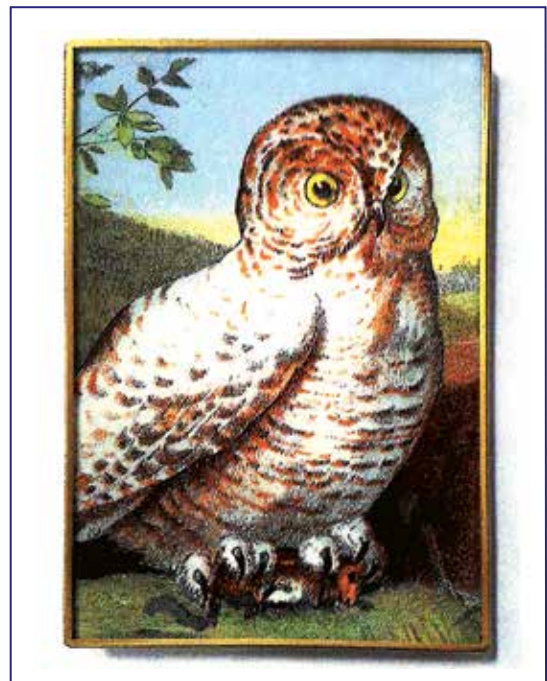
Papillions
5 x 8"
\$24.00
SKU: GT012



Sea Urchins
5 x 8"
\$24.00
SKU: GT013

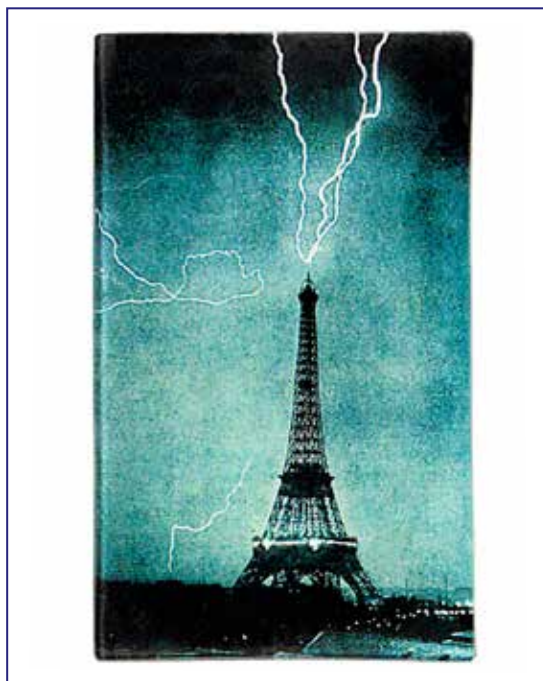


Beekeeping
4 x 6"
\$19.00
SKU: GT014



Snowy Owl
4 x 6"
\$19.00
SKU: GT015





Eiffel Tower Lightning Strike

5 x 8"

\$24.00

SKU: GT016

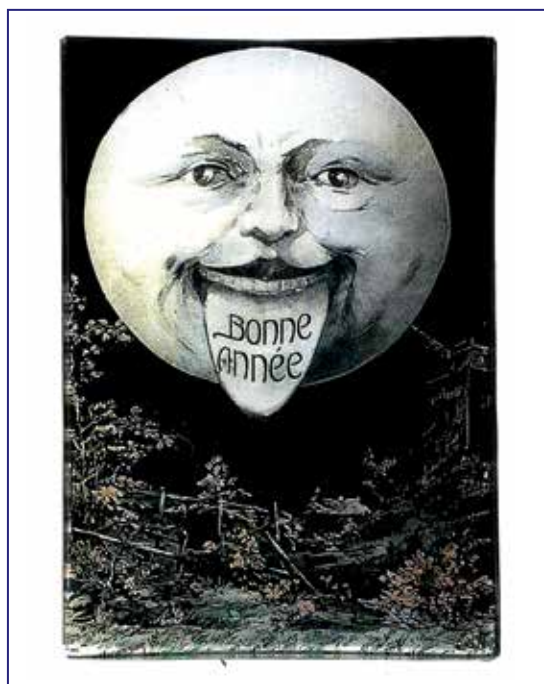


Ziegfield Follies Showgirl

5 x 8"

\$24.00

SKU: GT017



Bonne Année

4 x 6"

\$19.00

SKU: GT018



Mermaid

5 x 8"

\$24.00

SKU: GT019

Decoupage Under Glass

MACABRE

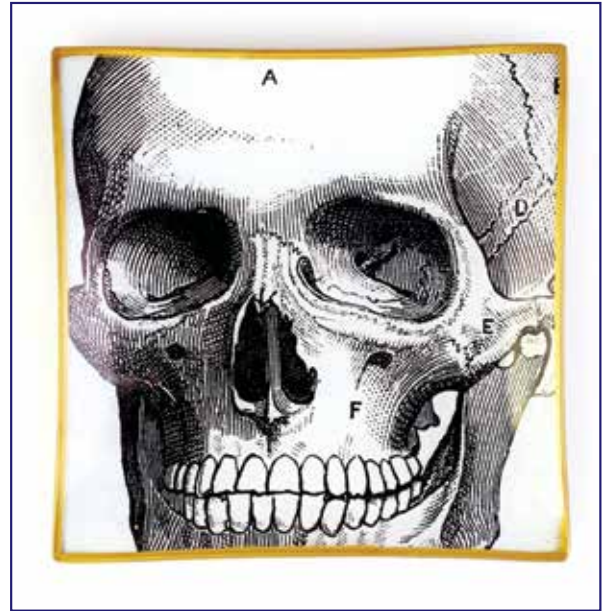


Danse Macabre

4 x 6"

\$19.00

SKU: GT020

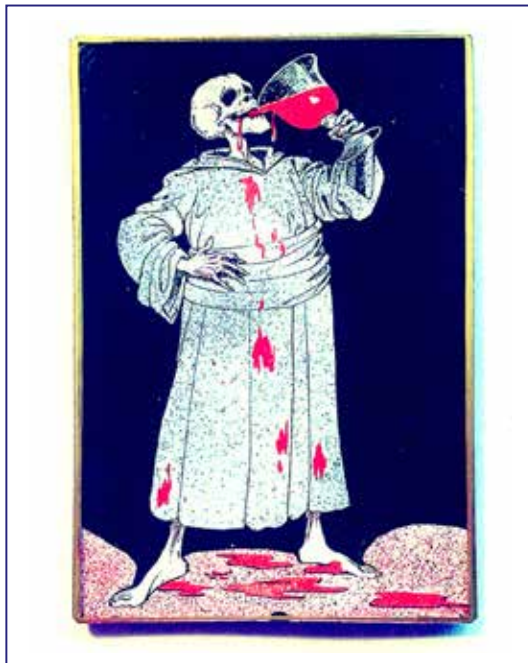


Skull Tray

6 x 6" **\$24.00** SKU: GTS021

8 x 8" **\$25.00** SKU: GT022

(The 6 inch tray has slightly different cropping.)

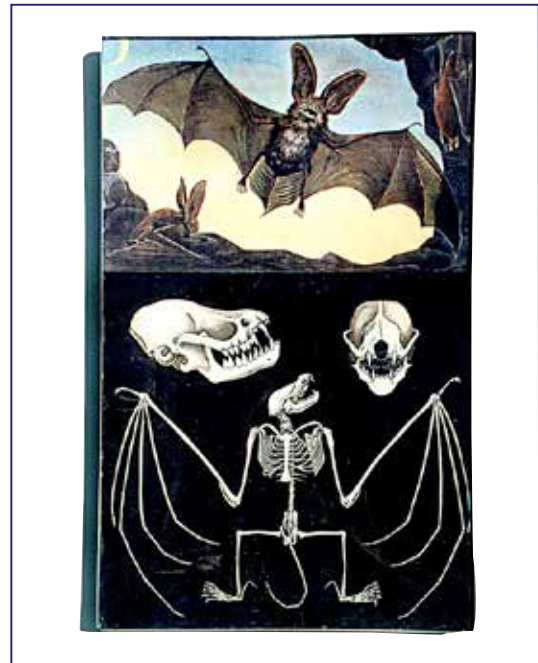


To Your Health

5 x 8"

\$24.00

SKU: GT023



Bat Biology

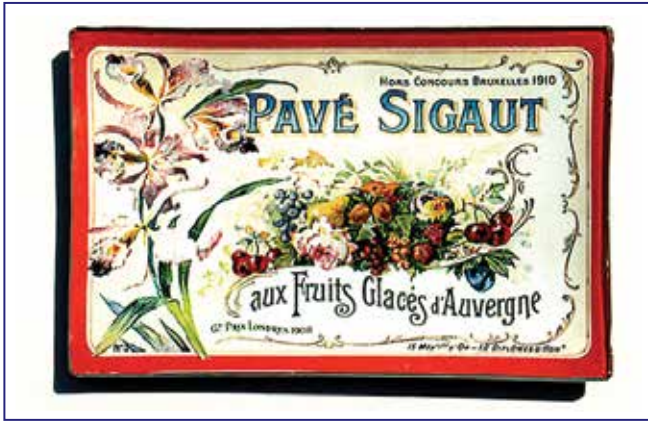
5 x 8"

\$24.00

SKU: GT024



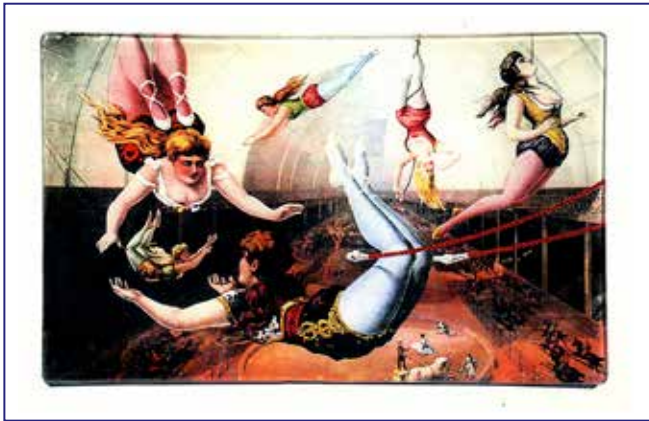
Découpage Under Glass



Pavé Sigaut
4 x 6"
\$19.00
SKU: GT025



Shell Postcard
4 x 6"
\$19.00
SKU: GT026



Victorian Trapeze Beauties
5 x 8"
\$24.00
SKU: GT027



Giraud Fils
4 x 6"
\$19.00
SKU: GT028

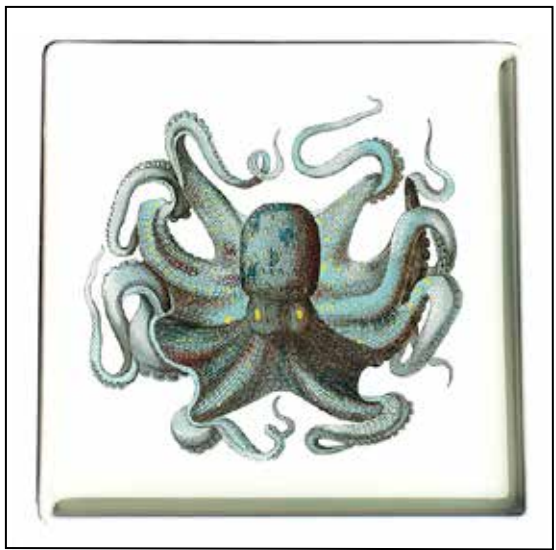




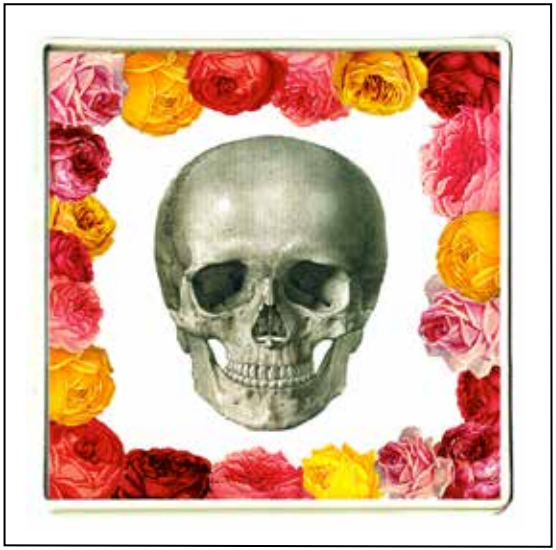
Valet Trays

These white, ceramic-covered stoneware trays are just the thing for holding all the small bits of life: loose changes, keys, jewelry, trinkets, pins, buttons—whatever your pockets, purse, or backpack can produce.

These resin-based trays are incredibly durable and look fabulous! The valet trays are water-tight and can be submerged in water. Each tray measures 6.5" x 6.5 inches, with a rim height of half an inch. For decorative purposes only. Wipe clean with gentle cleanser.



Octopus
\$13



Dia de Los Muertos
\$13



Prickly Pear Cacti
\$13



Death's Head Moth
\$13

Valet Trays



Pale Moon
\$13



Water Lily
\$13



Solitary Bee
\$13

ORDERING INFORMATION

To order, contact Andy Lowry: 916/753.0358
or andy@whygirlsgoastray.com

Opening Order: \$300.00

Minimum Order: \$200.00

View styles at www.whygirlsgoastray.com
Orders are shipped prepaid only.

SHIPPING

Shipping will be calculated at time of order. All taxes, shipping costs, duties, and international fees are the responsibility of the purchaser.

WHOLESALE

For any wholesale order, please allow 2-4 weeks for your order to be made and ready for shipment.

We try to accommodate rush orders when possible. Our order fulfillment time can be a little longer during the busy summer and holiday seasons, so please get your requests in early. We require that our orders be paid in full before we begin production. Accounts that have been active for a year may be considered for Net 30 terms.

All orders will ship via USPS or FedEx Ground. Once the order is placed and paid for, you will receive an e-mail within 72 hours confirming that your order has gone into production. It may take up to 4 weeks from receipt of your order confirmation for your items to be ready to ship. You will receive another e-mail once the item has shipped with tracking information.

USPS/FedEx will attempt to deliver to your address three times. Why Girls Go Astray is not responsible for additional shipping fees if you are not available to receive your package. Should you waive signature upon delivery, Why Girls Go Astray cannot be held responsible for your package once it is left at your door.

PRIVACY POLICY

We do not share any of your information with anybody, ever.

DAMAGE OR BREAKAGE

Despite our very best efforts to prevent it, items are occasionally damaged during shipping. Should this occur, it is important that you keep all of the original packaging and contact us within **5 days** of receiving the item. We will replace your item, and reship as soon as USPS/FedEx has obtained possession of the original package, and the replacement products are available for shipment.

RETURNS

If, for any reason, you are not satisfied with your purchase, you may return it to us for an exchange, refund, or combination of both within **5 days** of receiving the item.

RETURN PROCEDURE

To make a return, please email andy@whygirlsgoastray.com for a return authorization BEFORE you send back the item. Why Girls Go Astray is not responsible for missing packages or any damage that occurs in return shipping. We encourage you to pack and seal the merchandise safely and securely, ideally in its original packaging. We recommend using UPS or FedEx and insuring the item for its full value. Once we receive the merchandise, the return will be processed within 72 hours and you will receive a confirmation e-mail with either your refund information or an order confirmation for the item you have requested in exchange.

CARE: For decorative purposes only.

Resin trays: Hand-wash with gentle cleanser, waterproof. Resin may yellow over time; this is a natural process.

Under-glass trays: Wipe clean with glass cleaner; do not submerge in water.

Prices, Designs, and Items are subject to change without notice.



©2018 WHY GIRLS GO ASTRAY ALL RIGHTS RESERVED

